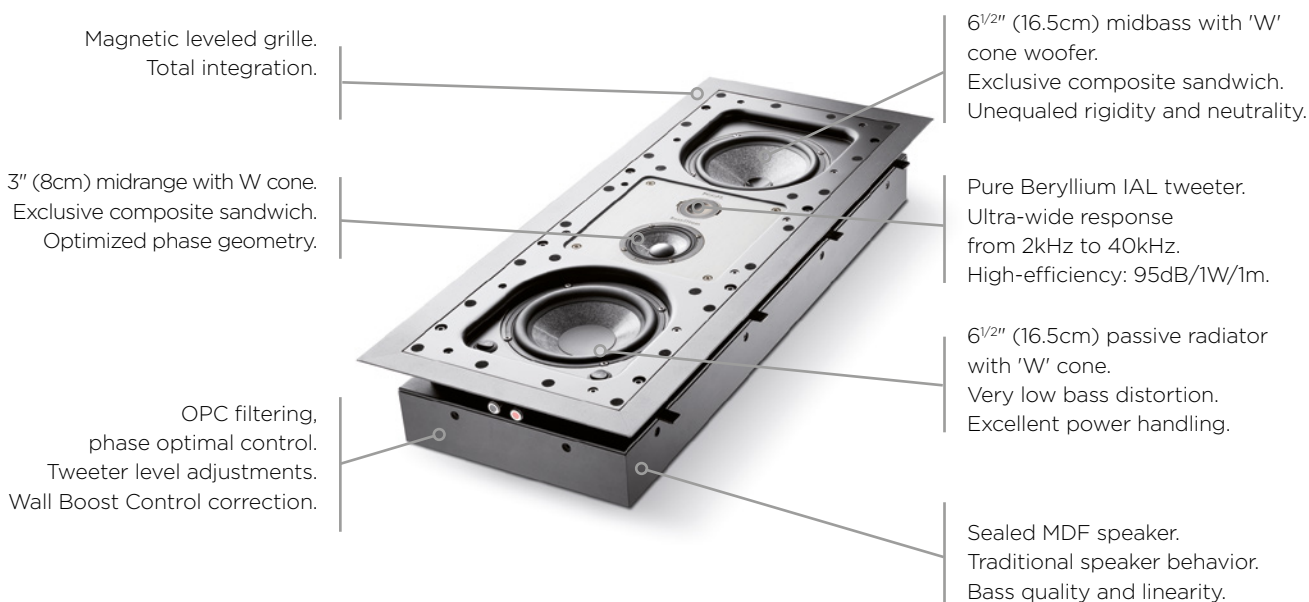


ELECTRA IW1003 BE

Product Data Sheet



True technology concentrate, the Electra IW1003 Be integrates the best of Focal: Beryllium IAL tweeter, Utopia III latest generation 'W' cones, OPC filtering, passive radiator, this reference In-Wall loudspeaker is the high-end traditional alternative loudspeaker.



Key points:

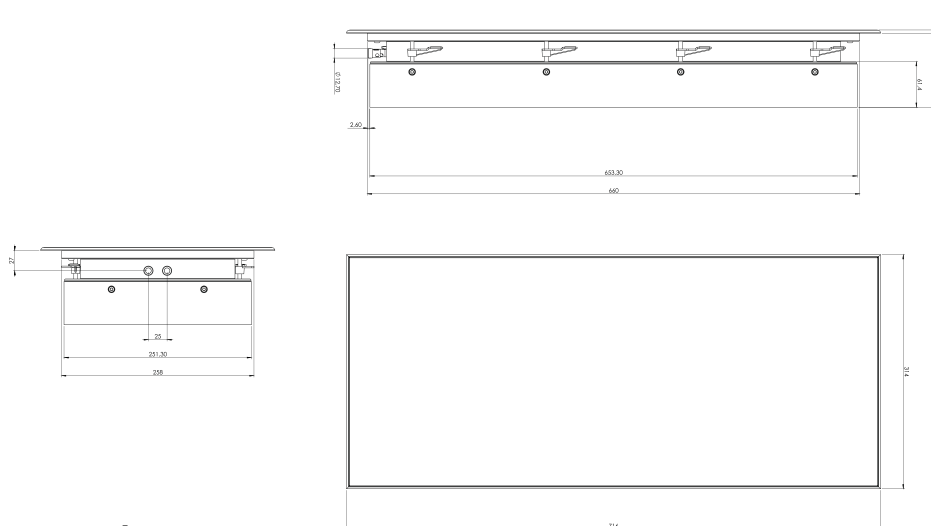
- True compact alternative to the traditional high-end 3 way loudspeaker
- Easy and quick installation
- Speaker drivers developed and manufactured in France by Focal
- Ready-to-paint grille

Type	3-way In-Wall sealed speaker
Drivers	6 1/2" (16.5cm) 'W' passive radiator 6 1/2" (16.5cm) 'W' woofer 3" (8cm) 'W' midrange 1 1/4" (27mm) Be IAL inverted dome tweeter
Frequency response (±3dB)	49Hz-40kHz
Sensitivity (2.83V/1m)	90dB
Nominal impedance	8 Ω
Recommended amplifier power	25-240W
Tweeter adjustment	-3dB / 0dB / +3dB
Midrange adjustment	-3dB / 0dB / +3dB
Crossover frequency	400Hz / 2,000Hz
Frame size: - with grille	12 1/8" x 27 15/16" - (0 3/16" thick) (308x710mm - (4.5mm thick))
- without grille	11 3/4" x 27 9/16" - (0 1/16" thick) (298x700mm - (1.5mm thick))
Cut-out dimensions (HxW)	26 1/8" x 10 3/8" (664x262mm)
Depth from wall	3 7/8" (99mm)
Net weight	22lbs (10kg)



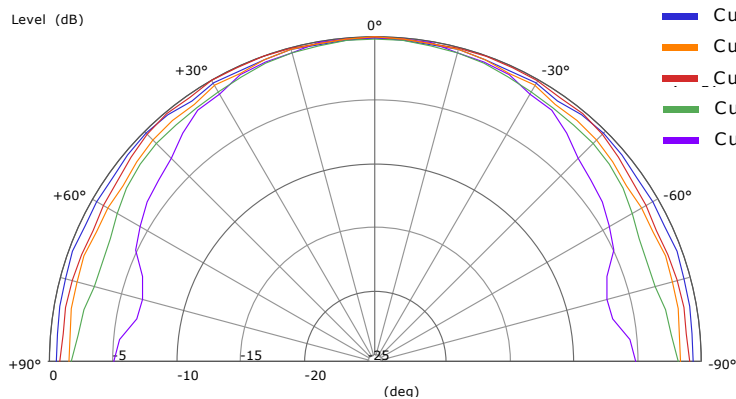
Adjustable aluminum midrange and tweeter support for vertical and horizontal use.

Dimensions

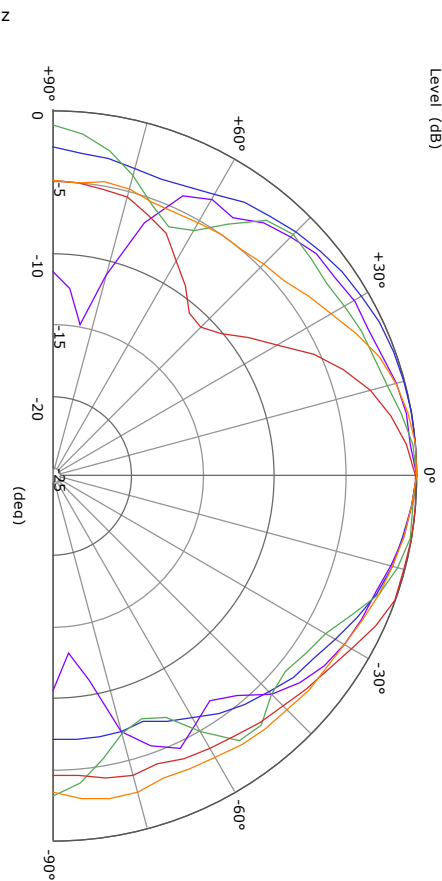


Directivity Measurements

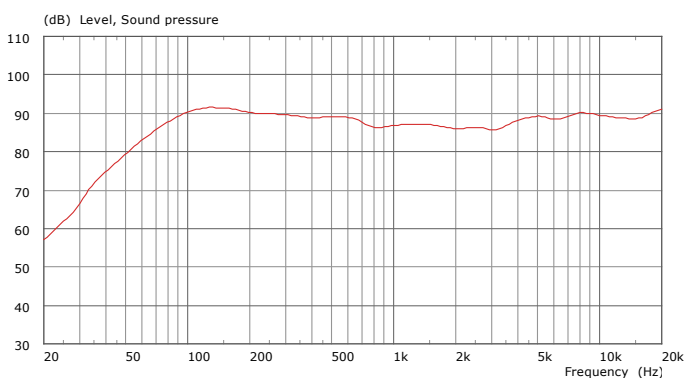
Horizontal (right)



Vertical



Frequency Response



Electra IW 1003 Be Speaker level Calculation Table

Power/Distance	1m	2m	5m
1W (2.83V)	90dB	84dB	76dB
10W (8.94V)	100dB	94dB	86dB
20W (12.6V)	103dB	97dB	89dB
30W (15.5V)	105dB	99dB	91dB

Summary	125Hz	250Hz	500Hz	1kHz	2kHz	4kHz	8kHz
NPA (2.83 V/1 m) (dB)	92	90	89	87	86	88	90
Opening Angle at -6dB	180°	180°	180°	180°	170°	180°	140°