

CM6E



The Apart CM6E is a dual cone 100 volt / 8 ohm built-in ceiling loudspeaker. The loudspeaker has a 6.5" dual cone woofer and a high quality 100 volt speaker line transformer with multiple power taps. CM6E is the perfect choice for the distribution of microphone calls and background music. The mounting frame is made of high quality ABS. CM6E is available in black and white.

Safety precaution

- Keep this manual for future reference.
- When cutting the mounting hole for the speaker, make sure there is sufficient clearance behind the panel (no obstructions like A/C channels, power lines etc).
- Take care of your speaker wires, they should be free of damage. Damaged speaker wires might result in poor sound quality and can damage amplifiers.
- Only use accessories specified by the manufacturer
- Make sure the mounting panel can support the speakers weight.
- Use sufficient amount of speakers to avoid dead spots.
- No mains power shall be connected to the loudspeakers, doing so will damage the speaker.
- This apparatus should only be serviced by qualified personnel. If not warranty might be void.
- Use cable of the right gauge, certainly for long runs.
- Use cables with clear color indication and maintain polarity throughout the whole system.
- Avoid loud feedback from microphones, this can damage your speaker.
- Please check the units condition after unpacking. If the outside of the carton box has been damaged, inform your shipper immediately.

Warranty info

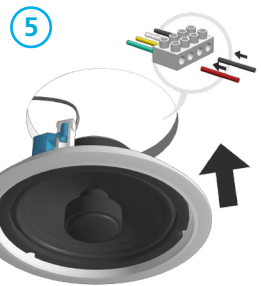
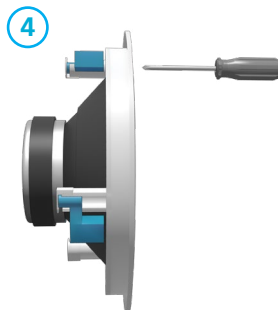
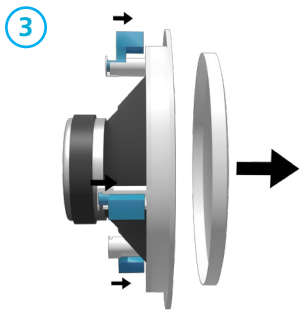
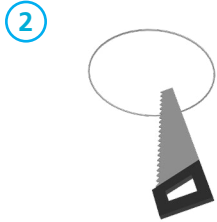
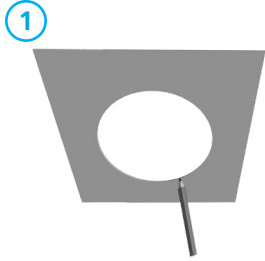
Warranty claims and claims for hidden defects can be considered only if the defects appear within the warranty period of 24 months and are notified within 8 days following their appearance per registered letter. The warranty is not valid in case of an incident, wear, for moving parts, power surges, inadequate packing or shipping, improper use or

storage and the disregard of recommendations of Apart-Audio. The warranty only concerns the spare parts and not the involved labor, transportation or any other costs. The product must be returned in the original packaging with the proof of purchase by an Apart-Audio authorized reseller. The general terms and conditions can be found here:

The general terms and conditions can be found here:

http://www.apart-audio.com/conditions/General_Terms_and_conditions_Apart_Audio.pdf

Mounting the loudspeaker



The loudspeaker is easy to install, due to its simple mounting system.

- (1) Use the cutout template to mark the mounting hole.
- (2) When making the hole in your mounting panel, double check if there are no cables or any other obstructions behind the mounting panel. Cutting the mounting panel without this check might result in damaged infrastructure or power lines. Please make sure that the mounting structure is capable of safely supporting the speaker's weight.
- (3) Remove the speaker grille: turn the mounting clamps (dog-ears) outwards and push them in the direction of the grille until it pops out. Remove the grille.
- (4) Turn the dog-ears inwards again and tighten the dog-ear screws slightly to make them stay in the inward position.
- (5) Connect the speaker wires and insert the speaker in the precut speaker opening.
- (6) Fasten the dog-ear screws carefully until the speaker sits safely in place. Do not overtighten the dog-ear screws!
- (7) Carefully push the grille back in place.

NOTE: for use in low impedance systems, always disconnect the 100 volt transformer and connect the low impedance speaker wires directly at the speaker.

loudspeaker system	dual cone	main construction material	ABS plastic
woofer size	6.5 inch	grille main material	steel
impedance	4 ohms	woofer cone material	paper
100 volt power taps	6 - 3 - 1.5 watts	mounting system	3 screws
low impedance dynamic power	15 watts	outside diameter	205 mm
SPL 1W/1m	91 dB	depth	70 mm
max SPL 1m	99 dB	cutout diameter	186 mm
frequency response	70 - 20 kHz	net weight product	0.75 kg
IP rating	50	dispersion angle 1000 Hz	180°