

STICK
to the future...

“ In 1987, we designed the world's first computerized lighting controller. In 2000, the sector was revolutionised by our S.I.U.D.I. "Sunlite intelligent USB-DMX interface."
Today, the "Sunlite Touch-sensitive Intelligent Control Keypad" which is commonly called STICK has the best assets to "Stick to forthcoming needs" and to become a new worldwide standard. ”

Bruno Nicolaudie
Founder and President
www.nicolaudie.com

stick

SUNLITE TOUCH-SENSITIVE INTELLIGENT CONTROL KEYPAD

New STICK-DE3+



More precise than
ever!

THE INDUSTRY STANDARD IN LIGHTING CONTROL

Flat wall mounted lighting controller

Boîtier de contrôle mural | Controlador plano, montaje de pared | Flach montierbarer Lichtsteuerung

State of the art design and technology

Design et prestations haut de gamme | Diseño novedoso y de alta tecnología | Modernstes Design und Technologie

Ideal for LED, RGB and DMX lighting

Idéal pour les éclairages DMX à LED | Ideal para LED, RGB y DMX | Ideal für LED, RGB und DMX Beleuchtung

Stand alone touch sensitive control panel

Panneau de commande sensitif autonome | Pantalla sensitiva al tacto | Berührungsempfindliches Bedienfeld

128 to 1024 DMX OUT channels

1024 canaux DMX en sortie | 1024 canales DMX OUT (2 universos) | 1024 DMX OUT Kanäle (2 Universes)

USB connection for easy programming

Logiciel de programmation via USB | Programación del software via USB | USB Verbindung zum Softwareprogrammieren

iPhone, iPad, Android applications

Applications pour smartphones | El software para los smartphones | Smartphones Programmen

Ethernet RJ45 connection and synchronization

Fonctions Réseau-Ethernet avancées | Características Ethernet avanzadas | Tiefe Ethernet-Network anwendungen

Unlimited memory via SDCARD

Mémoire SDCARD, capacité virtuellement illimitée | Memoria ilimitada via SDCARD | Unlimitierter Speicher durch SD-Karten

Integrated clock/calendar

Horloge et calendrier intégrés | Reloj/Calendario Integrado | Integrierte Uhr und Kalenderfunktion

8 Ports, RS232, Infra Red

8 ports, RS232, Infrarouge | 8 puertos, RS232, Infra Red | 8 ports, RS232, Infra Red

Internet Design Center for customization

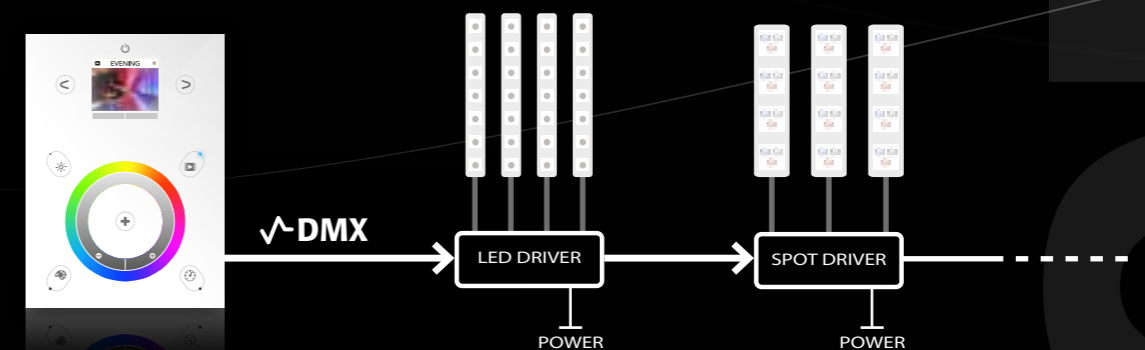
Personnalisation avec le Design Center | Centro de Diseño de personalización | Design Center für individuelle Anpassung

STICK-GA2

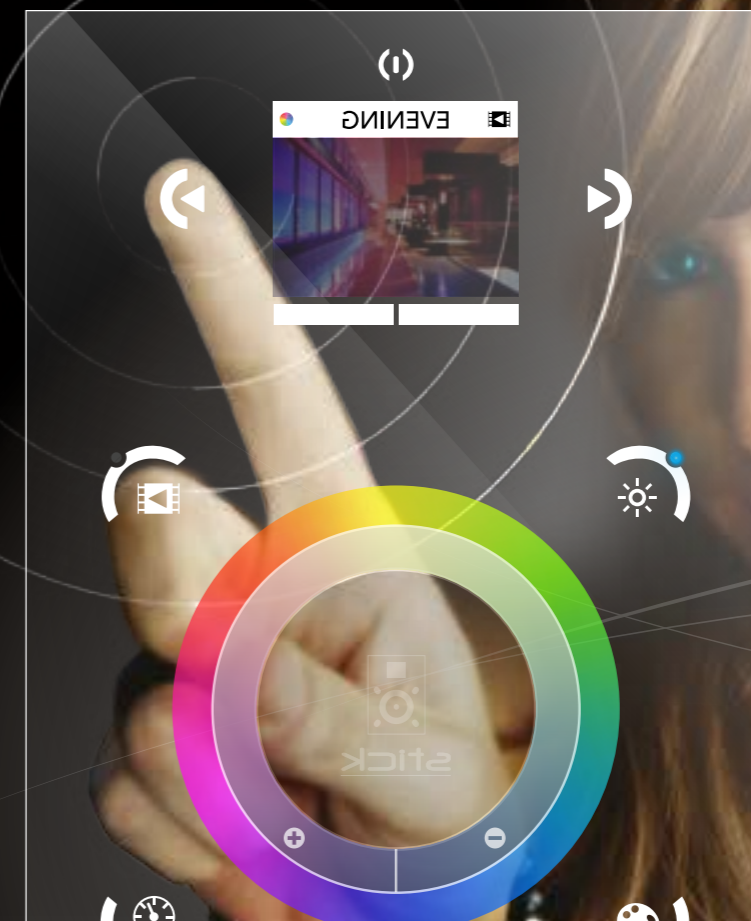
STICK-GU2

Wall-mounted touch sensitive DMX controllers

The STICK range has been designed to offer the perfect lighting control solution for any environment. DMX data messages are sent directly from the STICK to a DMX compatible power supply (sometimes called a 'DMX Driver'). The power supply listens to the DMX messages and supplies the power to the lighting fixture. For example, an LED strip may use a 24 volt DMX power supply. The DMX messages are then passed on to the next lighting fixture or DMX driver.



The sensitive keys enable you to easily and comfortably modify the lighting effects...
Controlling both speed and color has now become mere child's play.



RAINBOW
Dimmer
3%



STICK-DE3+



EASY SETUP ROBUST TECHNOLOGY

Thanks to their 'All-In-One' technology, each STICK package includes a high-tech keypad, stand alone memory storage and a powerful DMX512 lighting software package. Mainly due to an absence of mechanical buttons, the strongly built STICK is time proof.

DESIGN, SOBRIÉTÉ INSTALLATION SANS DIFFICULTÉ

L'absence de bouton mécanique donne au boîtier STICK une sobriété et une robustesse à l'épreuve du temps. Les designers l'ont voulu ainsi. Le boîtier STICK est adaptable aux multiples formats de boîtes électriques encastrables.

français

DISEÑO SENCILLO FUERZA EXTREMA Y FÁCIL INSTALACIÓN

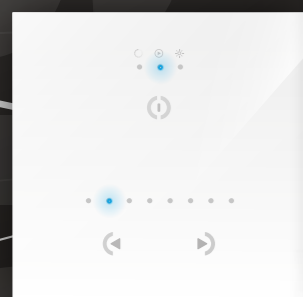
Al no tener botones mecánicos, la interfase fuerte STICK es a prueba-de-tiempo. Así es como los diseñadores lo planearon. Nuestra interfase STICK puede instalarse en una variedad de cajas eléctricas estándar.

español

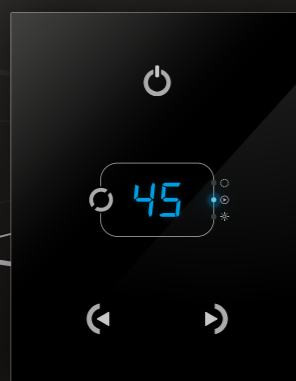
ELEGANTES DESIGN EXTREME HALTBARKEIT UND ZUVERLÄSSIGKEIT

Aufgrund fehlender Druckknöpfe hält die Box den neuesten Anforderungen stand. Genau so haben es die Designer gewollt. Die STICK Box kann an verschieden große elektrische Einbaurahmen angepasst werden.

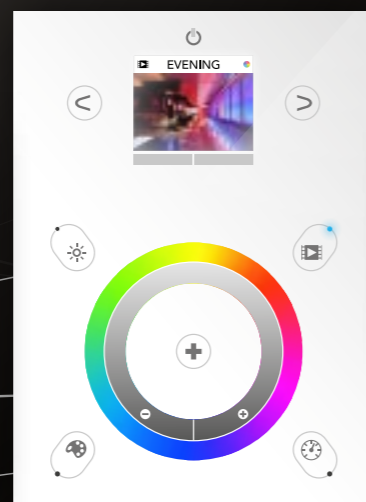
deutsch



STICK-GU2



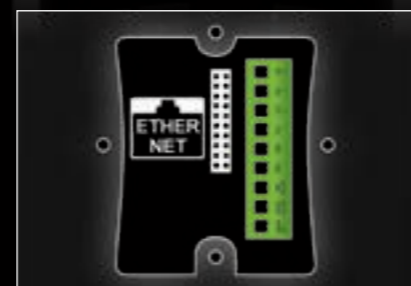
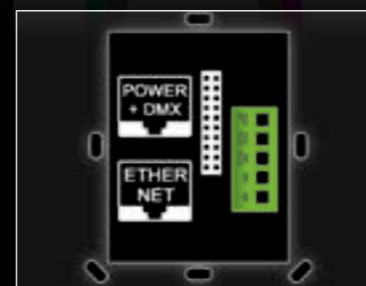
STICK-GA2



STICK-DE3+



STICK-KE1



STICK RANGE 4 PRODUCTS

The STICK range has been designed to offer the perfect lighting control solution for any environment. From the sophisticated STICK-GU2 and STICK-GA2 up to the powerful network functionality of the STICK-DE3+ and STICK-KE1, each STICK has been tailored to meet everyone's needs.

	STICK-GU2	STICK-GA2	STICK-DE3+	STICK-KE1	
General	Design	Glass	Glass	Glass	
	Dimensions	86 x 86 x 11 mm	86 x 110 x 11 mm	106 x 146 x 10 mm	130 x 170 x 11 mm
	Weight	130g	160g	185 g	200g
	USB connection	•	•	•	•
	Ethernet connection	•	•	•	•
	DMX channels	128	512	2x512	2x512
SD card			MicroSD card	MicroSD card	
Software	ESA software	PC	PC	PC	PC
	ESA2 software	PC / Mac	PC / Mac	PC / Mac	PC / Mac
	ESA Pro software			PC	PC
	DMX recorder software			PC	PC
	Remote control apps			iOS / Android	iOS / Android
	Arcolis app			iOS / Android	iOS / Android
Stand Alone	Number of scenes	24	99	500	200
	Number of zones	1	1	10	5
	Memory capacity (steps) with 20 chan.	840	3200	SD card limit	SD card limit
	Memory capacity (steps) with 60 chan.	310	1200	SD card limit	SD card limit
	Memory capacity (steps) with 512 chan.		140	SD card limit	SD card limit
	Power voltage	5V-12V DC	5V-12V DC	5V-6V DC	5V-6V DC
Power connector	Screw terminal block	Screw terminal or RJ45	Screw terminal or RJ45	Screw terminal block	
Triggering	Live control	Color / Dimmer	Color / Dimmer	Color / Dimmer / Speed	Color / Dimmer / Speed
	Touch-sensitive buttons	3	4	20	22
	Port triggering	1	8	8	8
	Clock triggering			100	40
	RS232 triggering			•	•
	Audio triggering				•
Infra Red triggering				KU1 only	
Optional	AC/DC adapter (not included)	Ref. POWER4M	Ref. POWER4M	Ref. POWER4M	Ref. POWER4M
	IR remote control (not included)				Ref. IR-REMOTE
	RJ45 to CONNECTOR BLOCK board		Ref. RJ2BLOCK	Ref. RJ2BLOCK	

STICK-GU2

DIMMER SWITCH OF THE 21st CENTURY

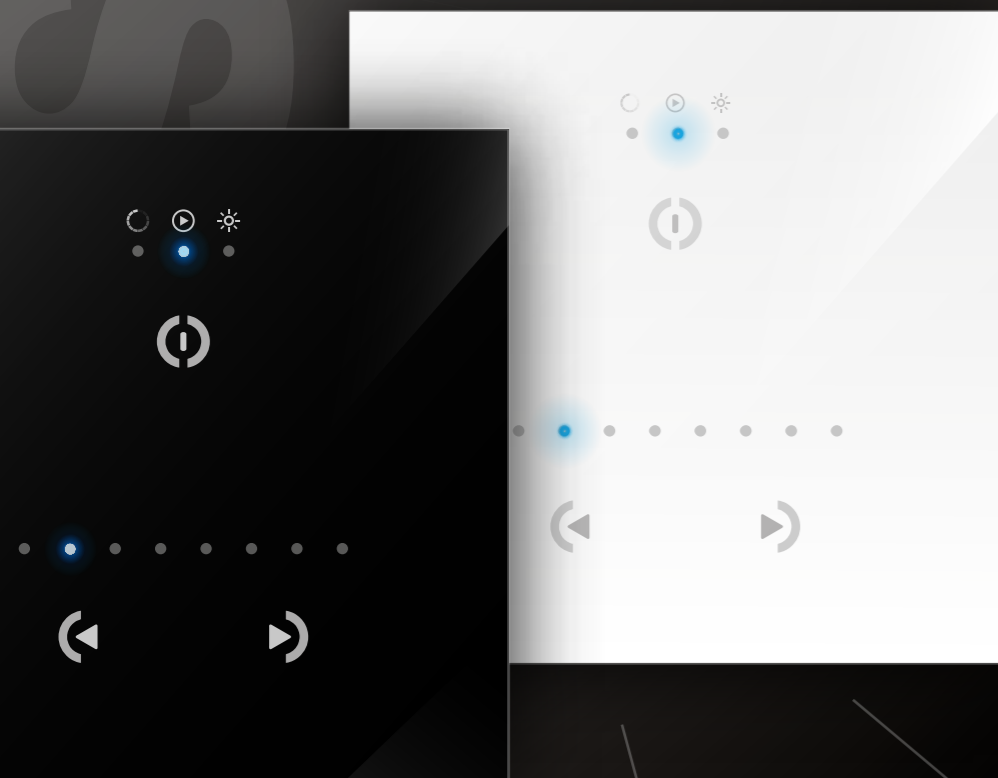
The STICK-GU2 is a sleek glass fronted DMX wall panel. Available in black and white, this small and easy to use interface packs in 3 touch sensitive buttons, Stand alone memory and USB into an intelligent wall mounted controller just 11mm thick!

- As simple as a dimmer switch
- 3 touch sensitive buttons
- Glass wall-mounted DMX controller
- Micro-USB for programming
- Customized design for OEM
- For PC, Mac & Tablet with USB
- 32bit ARM technology
- 86x86x11mm size
- Software included
- Stand alone operation
- Ready to use (pre-loaded)
- 128 DMX channels
- Up to 24 scenes

THE MOST SIMPLE
GLASS TOUCH DMX CONTROLLER

THE MOST POWERFUL
LIGHTING SOFTWARE BUNDLE

THE INDUSTRY STANDARD
FOR RGB, LED, DMX LIGHTING

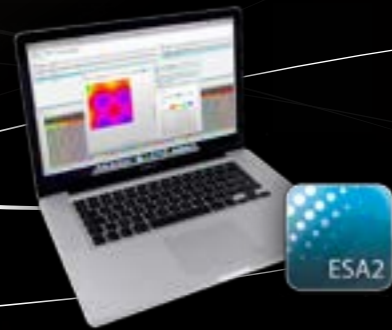
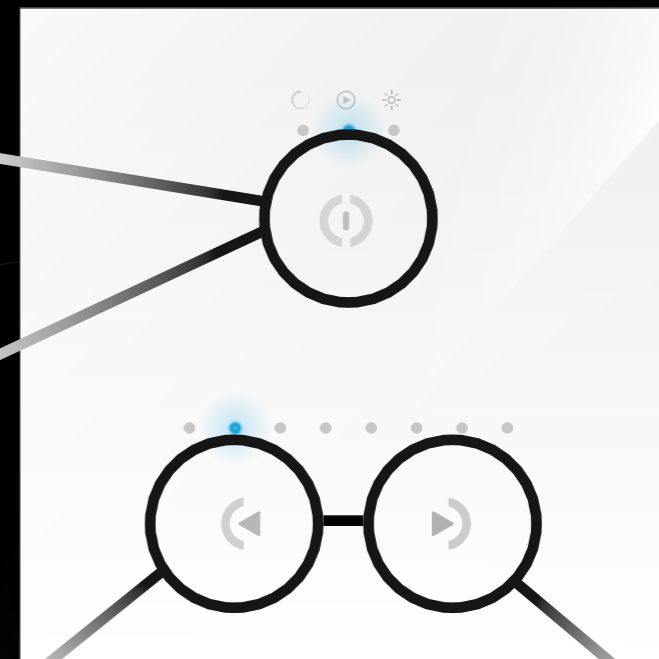


ON/OFF
Tap here to switch on and off

CHANGE MODE
Tap here To change between color, scene and dimmer mode

RESET
Tap both arrows together to remove any dimmer and color changes

COLOR/SCENE/DIMMER
Tap the arrows to change color, scene and dimmer values

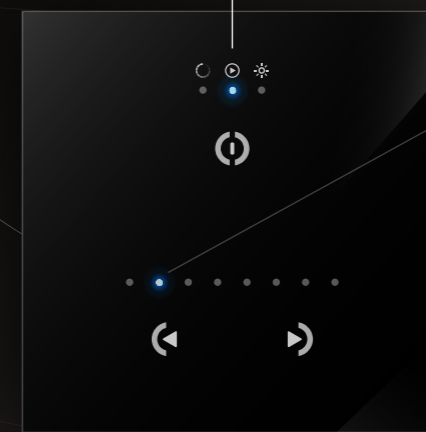


Tablet with USB PORT



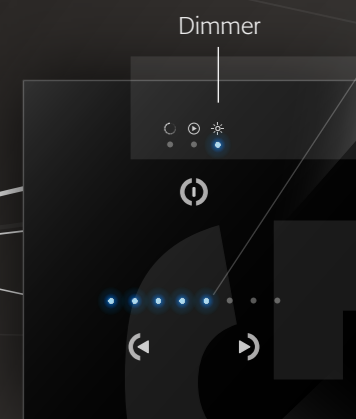
Yellow

Color



Scene

Scene 2/8



Dimmer

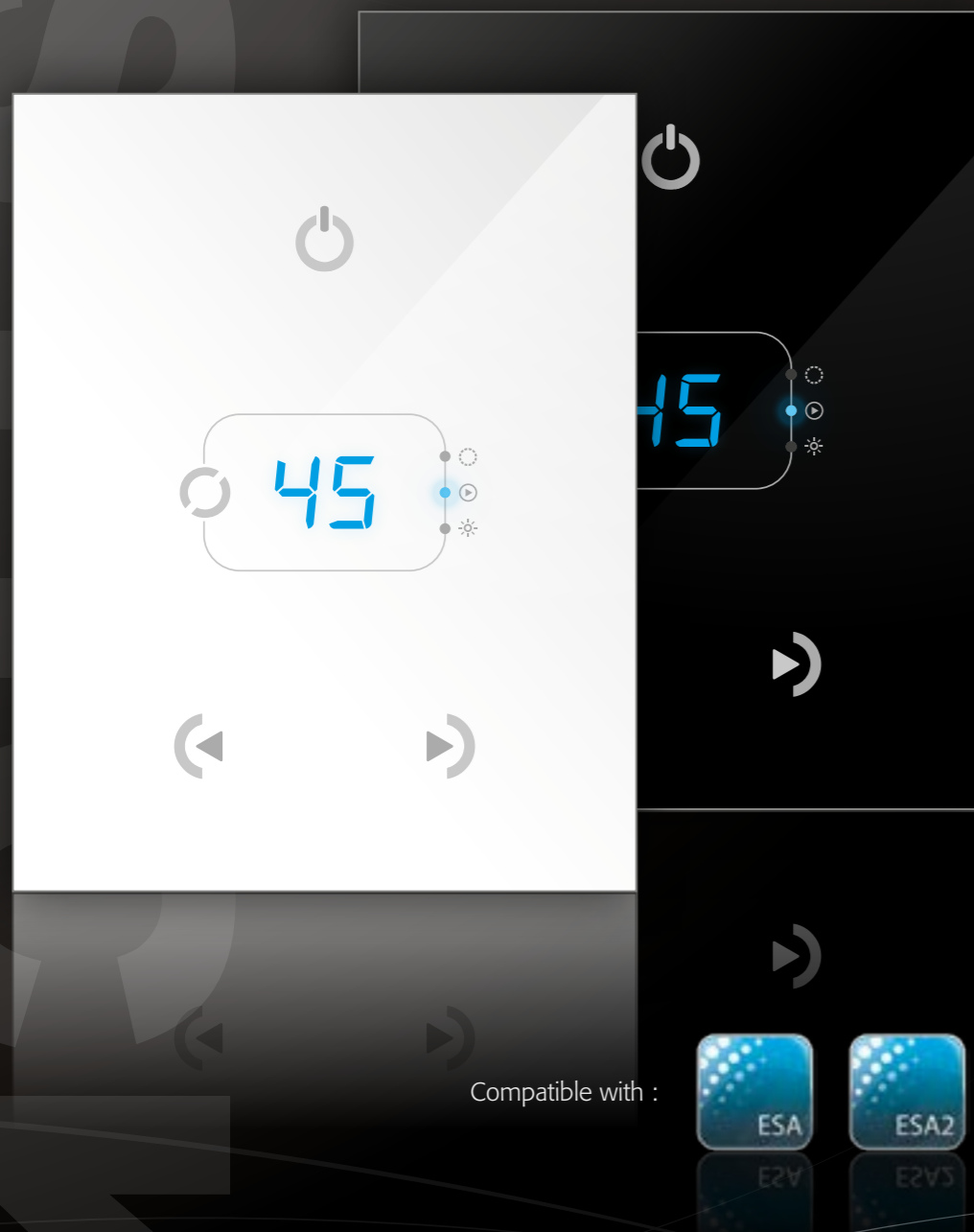
65%



STICK-GA2

MIGHTY POWERFUL BEAUTIFUL & CHARMING

The STICK-GA2 offers the best solution for projects requiring a large amount of scenes along with an uncluttered and intuitive interface. The computer programmable GU2 is capable of playing up to 99 scenes, each of which can be modified by touching the mode button to change the dimmer and color.



- Large memory capacity
- 4 touch sensitive buttons
- Glass wall-mounted DMX controller
- Micro-USB for programming
- Customized design for OEM
- For PC, Mac & Tablet with USB
- 32bit ARM technology
- 86x110x11mm size
- Software included
- Stand alone operation
- Ready to use (pre-loaded)
- 512 DMX channels
- Up to 99 scenes

Compatible with :



Tablet with USB PORT

ARCOLIS
mobile lighting controlARCOLIS
mobile lighting control**ON/OFF**

Tap here to
switch on and off

CHANGE MODE

Tap here
To change between
color, scene and
dimmer mode

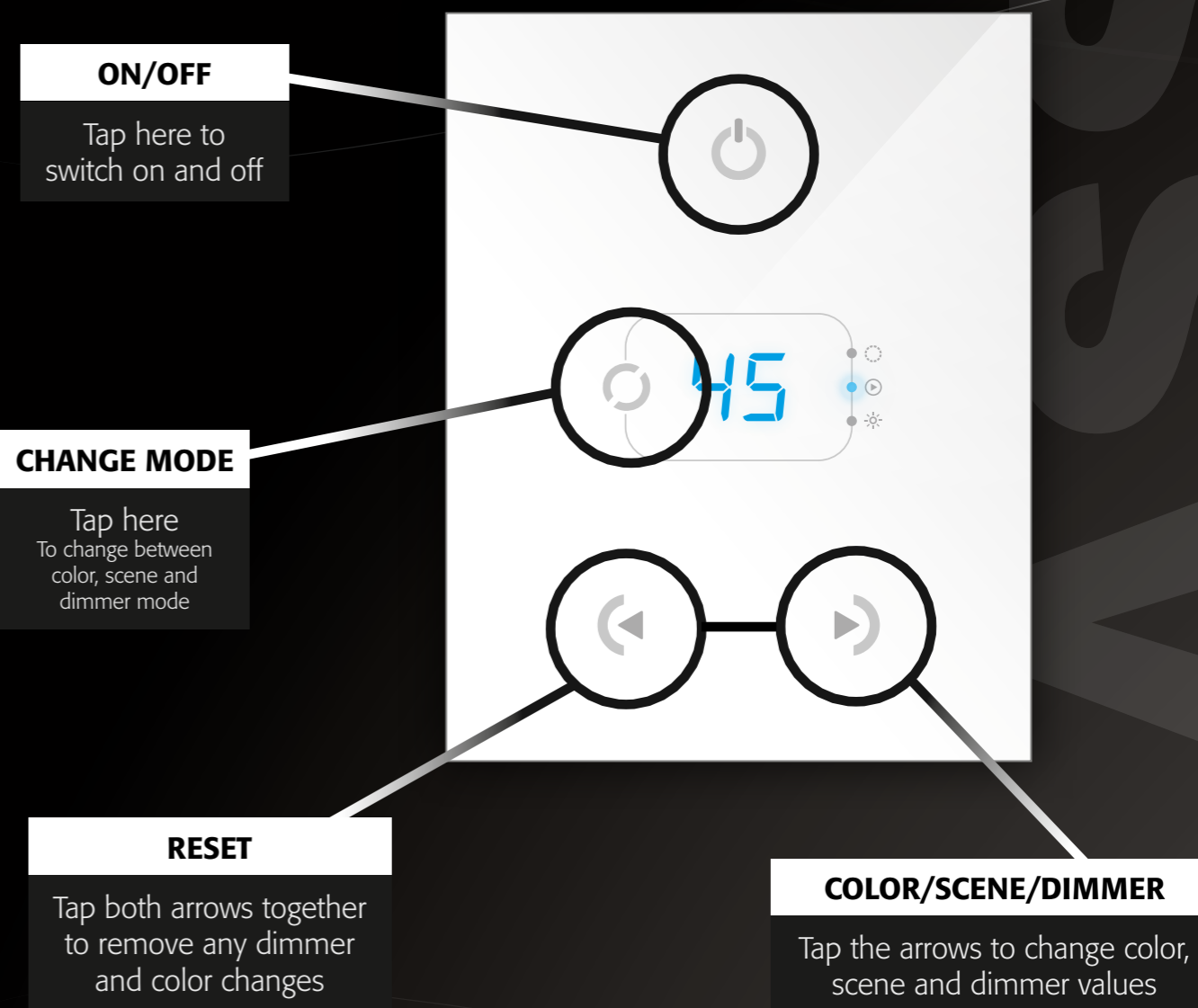
RESET

Tap both arrows together
to remove any dimmer
and color changes

COLOR/SCENE/DIMMER

Tap the arrows to change color,
scene and dimmer values

The LED display of the GA2 makes it easy to tell which scene number is playing. The wall panel is slightly taller than the STICK-GU2 allowing it to be mounted onto any single gang wall socket around the world.



STICK-DE3+ THE STAR OF THE STICK FAMILY

The feature rich STICK-DE3+ has been designed to provide a control solution for the most demanding of projects which anybody can use. The controller integrates a graphical color display allowing scene photos to be displayed. Easily view the selected zone, scene name and design without the need to navigate through complex menus.

New glass design

Graphical color display

Color/dimmer/speed palette

Touch sensitive buttons

Touch sensitive wheel

Multi-zone microSD memory

500 scenes, 10 zones

1024 DMX channels

USB & Ethernet connectivity

RS232, ports, infra red

Clock and calendar

Network communication

Catalog of designs

OEM customization

Windows/Mac software

iPhone/iPad/Android

THE LIGHTING CONTROLLER THAT EVERYBODY UNDERSTANDS

The STICK-DE3+ is based on 4 modes. Scroll around the touch sensitive wheel to change the dimmer, color, speed or scene or tap around the wheel for direct access to a value. The arrows can be used to step through values.

Use the arrows to switch between scenes (default configuration)

ZONE

Choose your zone and run up to 10 scenes simultaneously.

DIMMER

RAINBOW
Dimmer
78%

Make your lights brighter/darker and adjust the saturation.

COLOR RGB

RAINBOW
Color
R G B
043 230 255
GARDEN

Easily scroll through over 16 million colors, or set RGB values with the arrows.

SCENE

RAINBOW
Scene
09
GARDEN

Select from up to 50 static or dynamic scenes, use the arrows to change current scene.

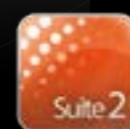
SPEED

RAINBOW
Speed
78%

Speed up and slow down a dynamic scene such as a color changing effect.

Tapping the center button will undo a dimmer, speed or color change.

Compatible with :



KE1 and DE3+ THE DIFFERENCES

STICK-KE1 HOW TO USE ?

A truly simple controller: an on/off button at the top; 8 buttons to choose from up to 200 lighting effects (25x8); 2 buttons to cycle between pages; and a horizontal fader to instantly adjust dimmer, speed and color.

STICK-DE3+

- Direct access to **8 scenes**
- Infrared remote control
- Customizable background design
- **5 zones** and **200 scenes**

- State of the art design with glass
- Color screen to display information
- **Circular palette** for live changes
- **10 zones** and **500 scenes**

Both have

- **1024 channels** (2 DMX universes)
- Unlimited microSD card memory
- USB and Ethernet connectivity
- ESA, ESA2 and ESA Pro software
- Apps for iPhone, iPad and Android
- Clock and calendar
- RS232 and 8 dry contact ports
- UDP triggering

STICK-KE1



A Blue LED is used to indicate whether the unit is on or off (Blackout).

Buttons 1-8 are used to select individual scenes. Scenes can be static or dynamic. Double pressing buttons 1-8 will reset the Dimmer, Speed, and Color to default.

Used to cycle between 25 different pages (A,B,C,D,E x 5). In combination with buttons 1-8, 200 different scenes can be stored.

The select button allows you to cycle through the Dimmer, Speed, and Color fader controls. The fader at the bottom of the unit is used to select the intensity of the Dimmer, Speed, and Color settings.

The Green LED indicates that the Dimmer, Speed, and Color settings on the STICK are set to default. If the fader is moved to the right or left of the default (green), one of the 8 blue LED's will indicate your current intensity level.

The colorized fader of the D2 design offers a direct access to basic colors with a simple touch.

COMMENT UTILISER LE STICK ?

Rien n'est plus simple : bouton on/off en haut, 8 boutons pour choisir l'ambiance lumineuse, 2 boutons pour changer de page, un fader horizontal pour modifier instantanément l'intensité, la vitesse ou la couleur des effets.

français

¿COMO UTILIZAR EL STICK ?

Nada es más sencillo: botón de encendido/apagado en la parte superior, 8 botones para escoger el efecto lumínico, 2 botones para cambiar la página, y debajo el fader horizontal para ajustar inmediatamente el dimmer, la velocidad y el color.

español

KURZANLEITUNG DES STICK'S

Nichts ist einfacher: eine Ein- und Ausschaltfläche, 8 Schaltflächen um Lichtstimmungen und Effekte abzurufen, 2 Schaltflächen um zwischen den Seiten zu wechseln, und einen horizontalen Fader um den Direktzugriff auf Dimmer, Geschwindigkeit und Farbe zu ermöglichen.

deutsch

SIMPLE USE WITH USB



USB



Using the "plug and play" USB connection is the most simple way to program the STICK controller: connect the device, start the programming software, create the show and finally press the "write memory" button to save the show into the stand alone memory.

ADVANCED USE

90% of applications use USB and DMX512 connections only, but the most demanding of our customers will also be able to interface additional devices such as contact closures, UDP/TCP, RS232, Ethernet and more.

CONNECTIVITÉ SANS LIMITE

90% des applications n'utiliseront que les connexions USB et DMX512, mais les clients les plus exigeants pourront aussi interfacer d'autres périphériques: Contacts sec, UDP/TCP, Entrée RS232, Ethernet...

français

CONECTIVIDAD SIN LÍMITES

El 90% de las aplicaciones usarán solamente los conectores USB y DMX512; pero nuestros clientes más exigentes aprovecharán el resto de nuestros conectores como puertos I/O (contacto seco), UDP/TCP, entrada RS232 (serial), Ethernet...

español

UNBEGRENZTE KONNEKTIVITÄT

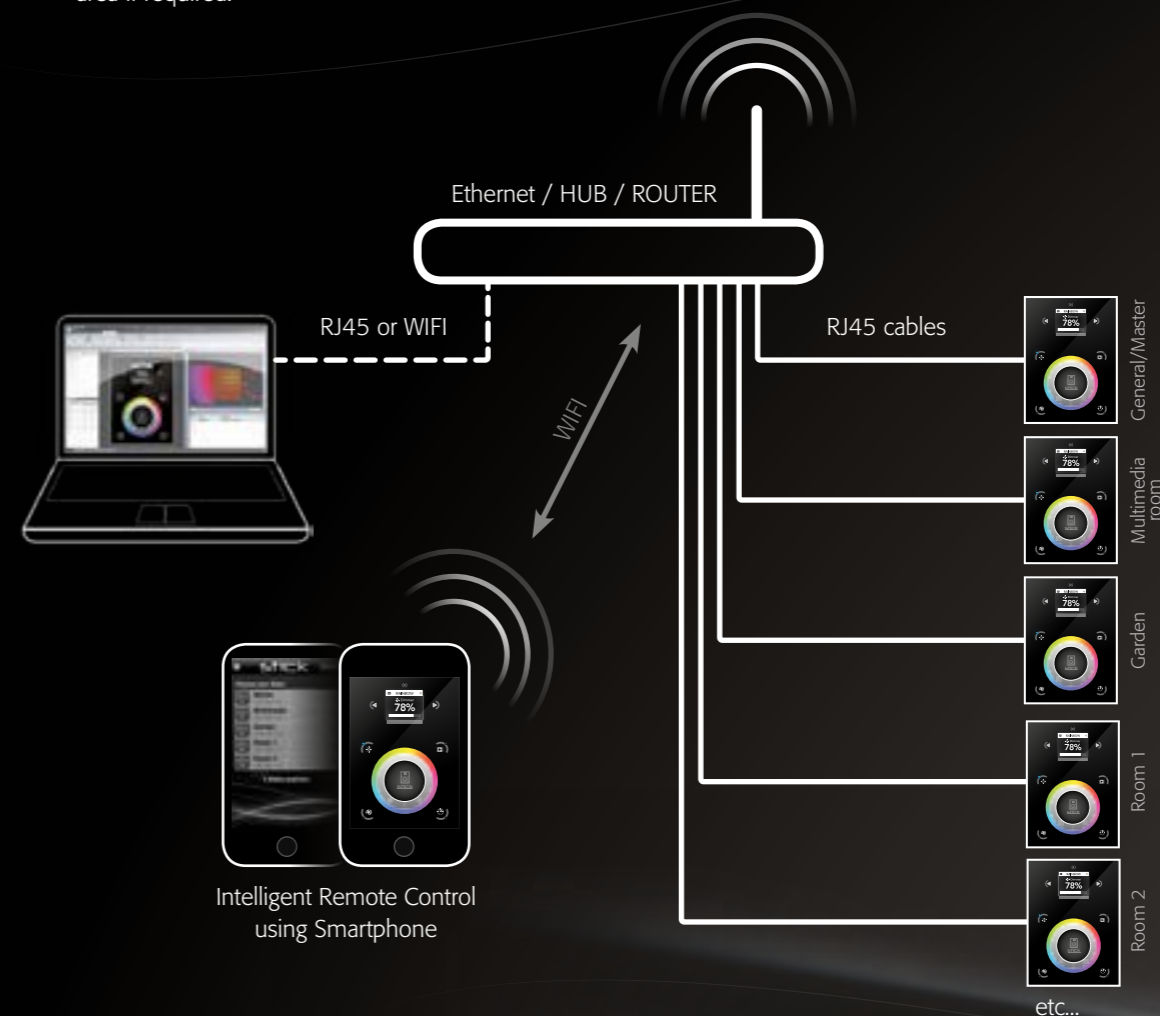
90% aller Geräte besitzen nur USB- und DMX512-Anschlüsse, aber unsere anspruchvollsten Kunden können weitere Bauteile, wie Kontaktschließer, UDP/TCP, RS232, Ethernet...

deutsch

NETWORK SYNCHRONIZATION

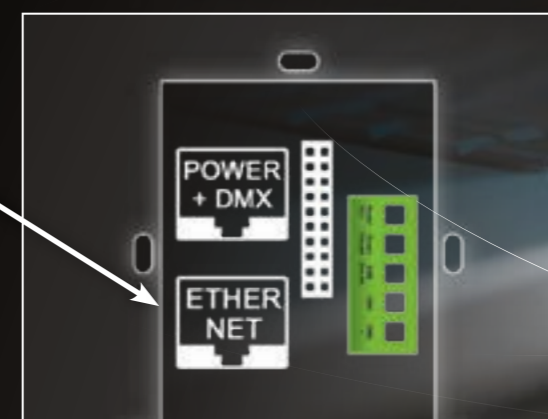
The Ethernet connections of the STICK-KE1 and STICK-DE3+ offer the possibility to interconnect several STICK controllers for multi-room installations and direct control via a cable or wireless network using a computer or a smartphone. How does it work?

- A single ESA Pro show/document is used. This includes all DMX fixtures and areas.
- Multiple STICKs can be added in the Stand-Alone window. A different combination of scenes and areas can be assigned to each STICK.
- Each STICK controller's memory is written simultaneously using its name and IP address over the local network.
- Matching areas are synchronized between the STICKs. It is also possible to disable the synchronization of an area if required.



Intelligent Remote Control
using Smartphone

To access Ethernet network features, you need a STICK-KE1 or a STICK-DE3.



▲ Only STICKs of the same model can be synchronized

TIMELINES WITH ESA Pro SOFTWARE

ESA Pro combines many innovations along with an ergonomic design. It has been specifically designed for the STICK SD card range and includes powerful new tools required by the latest lighting fixtures. The software has been developed specially for architectural lighting and features easy to use effects which can be dropped onto timelines, along with multi-zone and multi-STICK synchronization allowing you to program a project with multiple rooms and areas with ease.

It is possible to setup several zones for a show allowing you to split up a building for example and to play different sequences in each room.

Each zone contains a list of scenes (sequences). They can be static or dynamic, loop or not...

In this window we can group the fixtures, setup their position and then use the «Rects» to define a virtual position for a sequence. We could for instance, play several videos on the same LED screen at different positions.

Every scene is built with the timelines. Thanks to this tool, it becomes very easy to build your show.

Various effects, static or dynamic (matrix effects, curves...) are available and can be dragged to the timelines.

NOUVEAU LOGICIEL ESA PRO

Le nouveau logiciel ESA Pro a été spécialement conçu pour l'éclairage architectural et combine la simplicité d'utilisation d'Easy Stand Alone et de nouvelles fonctionnalités nécessaires au contrôle des dernières générations de projecteurs à LED.

français

SOFTWARE NUEVO ESA Pro

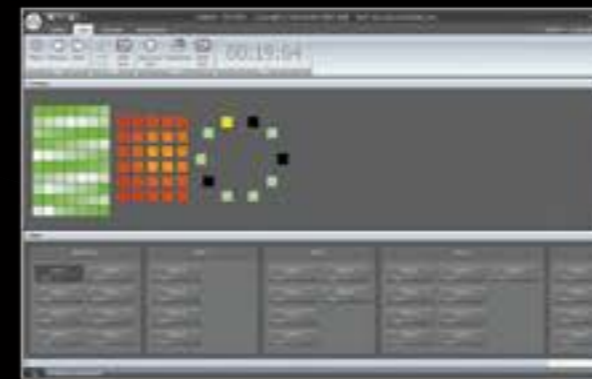
El nuevo ESA Pro es creado para la iluminación arquitectónica y combina novedades ergonómicas. Ha sido diseñado para las características del STICK el cual incluye herramientas necesarias para fijaciones LED (línea de tiempo, zona-múltiple...).

español

NEUE SOFTWARE ESA Pro

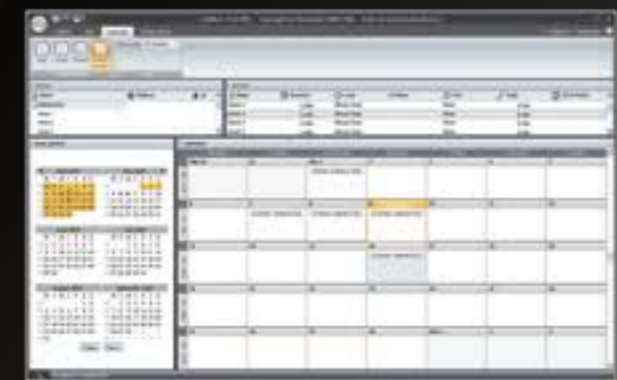
Das neue ESA Pro wurde speziell für den Einsatz in der Architekturbeleuchtung entwickelt und verbindet innovatives und ergonomisches Design. Natürlich wurde diese vornehmlich für die STICK Funktionalitäten gestaltet und enthält neue leistungsstarke Tools, die für die jüngsten LED Geräte benötigt werden. (Timeline, Multi-Zone, Kalender, Matrixsteuerung...)

deutsch

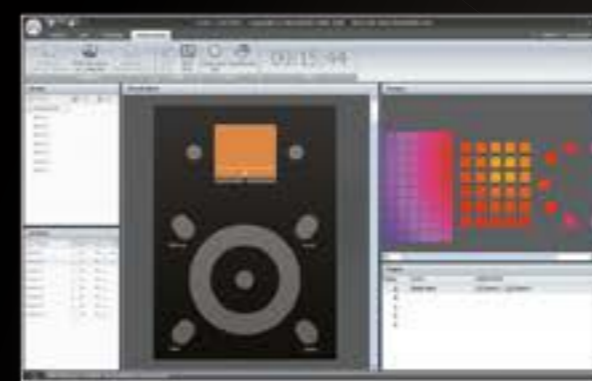


The live tab allows you to play the created sequences. You can either test your stand alone show before writing to the memory or use this tab for real-time control of your lights.

Thanks to the calendar, it becomes very easy to setup a time/date trigger for every scene. Simply drag the scene to the correct position.



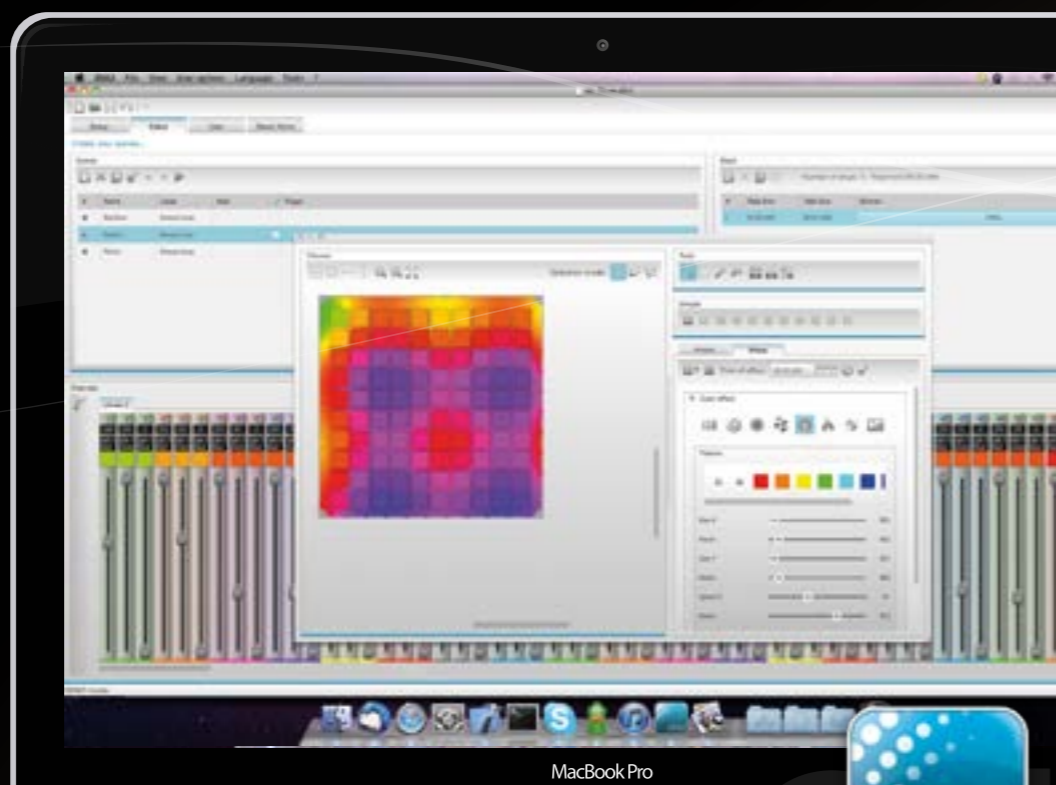
The stand alone tab allows you to directly assign a scene to a button on the STICK. Simply drag and drop the scene onto the image. Once the scenes are assigned, press the «write» button to save the show into the stand alone memory.



NEW SOFTWARE ESA2 PC/Mac

Easy Stand Alone 2 is the radical new stand alone package from Nicolaudie. Available for Windows and Mac OS X, lighting programming has never been more accessible.

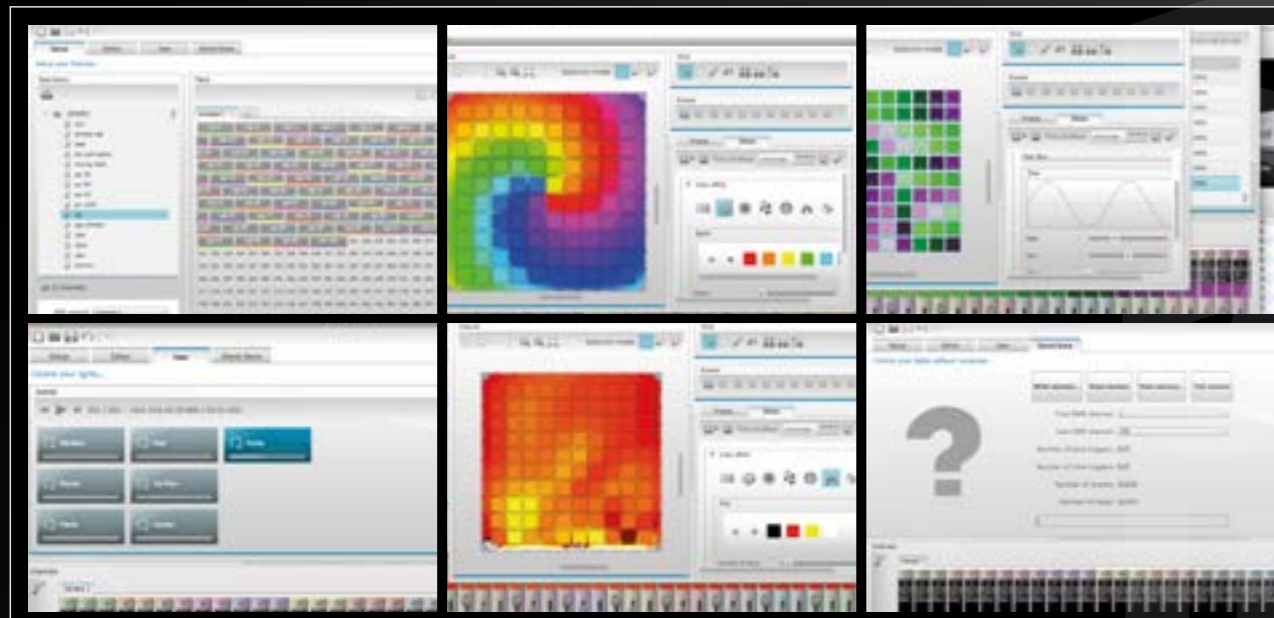
The dynamic software combines simplicity and a feature rich effects generator to make it the one of the most definitive lighting control products available. Lighting programming has never been so simple with ESA2.



Drag & drop to add your lights

Build color changing sequences

Advanced vector effects creation



Real time lighting control

Quickly create stunning effects

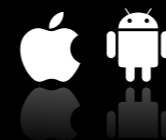
Play without a computer with 1 click

ARCOLIS TOUCH LIGHTING EDITOR

ARCOLIS allows you to easily create a dynamic lighting show for any kind of DMX RGB Fixture. In just a few steps, you'll be able to take control of all your DMX equipment in live, or Stand alone mode.

ARCOLIS is innovating in terms of architectural lighting control. It is available to fit the trendiest portable devices and has become the ideal partner on your worksite or at home to dynamically control your lighting. Thanks to its exclusive concept, selectively changing the lighting surroundings in each area is now made as simple as phoning or sending a text message!

ARCOLIS is compatible with any iOS and ANDROID smartphones or tablets. By using your mouse or touch screen, the various software screens allow you to directly monitor the current environment or to re-program new static or dynamic light environments. ARCOLIS is a simple application which can be used by just about everyone in any situation.



ARCOLIS
mobile lighting control

STICK REMOTE & DMX LIGHTPAD 3 WIFI REMOTE CONTROL

STICK Remote allows you to control the STICK-KE1, and DMX Lightpad 3 is used to control the STICK-DE3+. Simply connect to your wireless local network, the app will automatically find all the STICKs and allow you to control them all at once.

You can set individual passwords for each STICK to prevent unauthorized access.

With a simple and intuitive graphical interface you will be able to control all your DMX fixtures easily, without any technical knowledge.

Triggering scenes and changing the speed, color and intensity has never been so simple!



EASY REMOTE



Take your lighting control to the next level

Create an entirely customized remote controller for your tablet or smartphone. Easy Remote is a powerful and intuitive app allowing you to easily add buttons, faders, color wheels and more.

It can control our Ethernet enabled stand alone controllers: STICK-KE1 and STICK-DE3+.

Connect to a WiFi network and the app will find all compatible devices.

